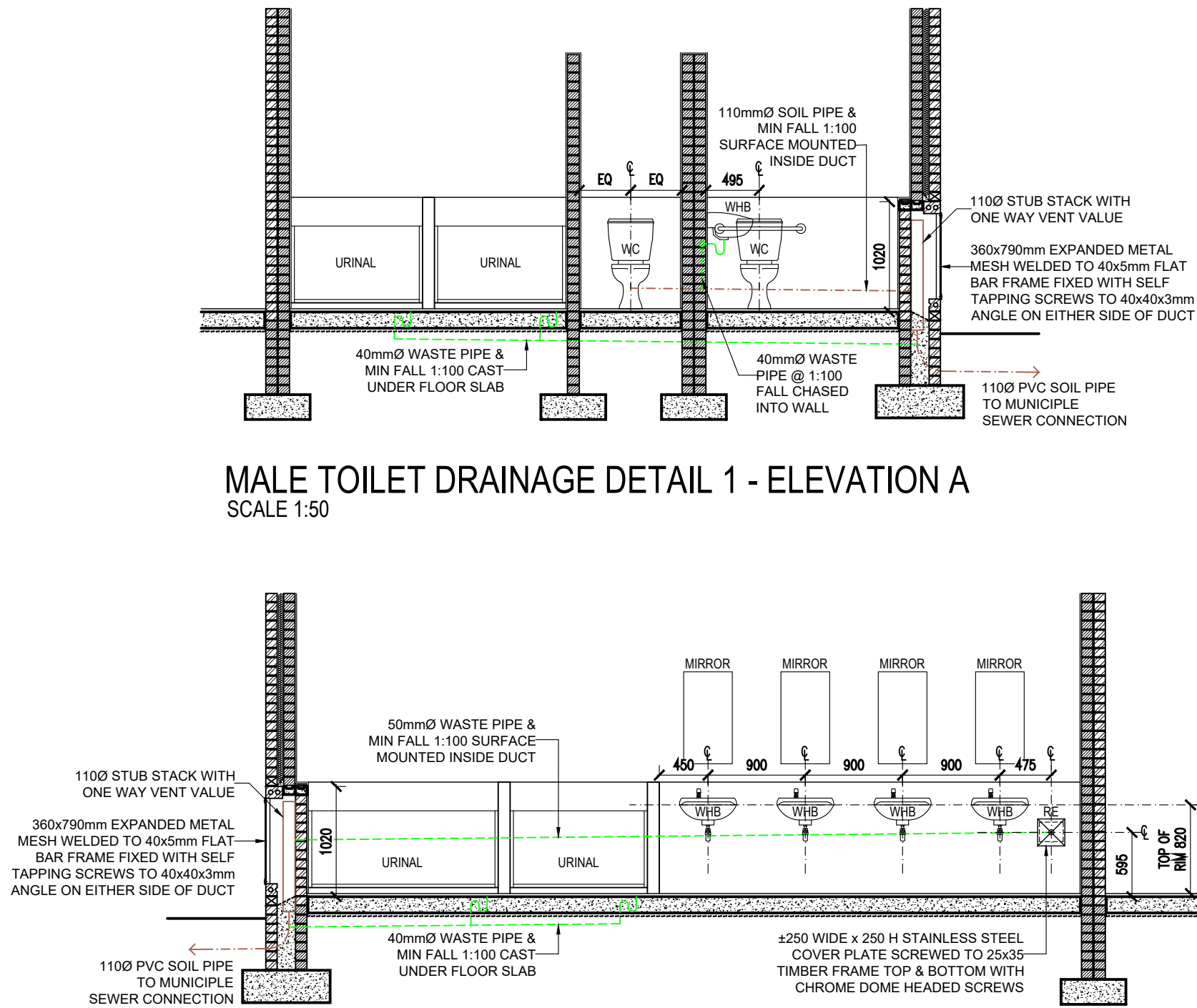
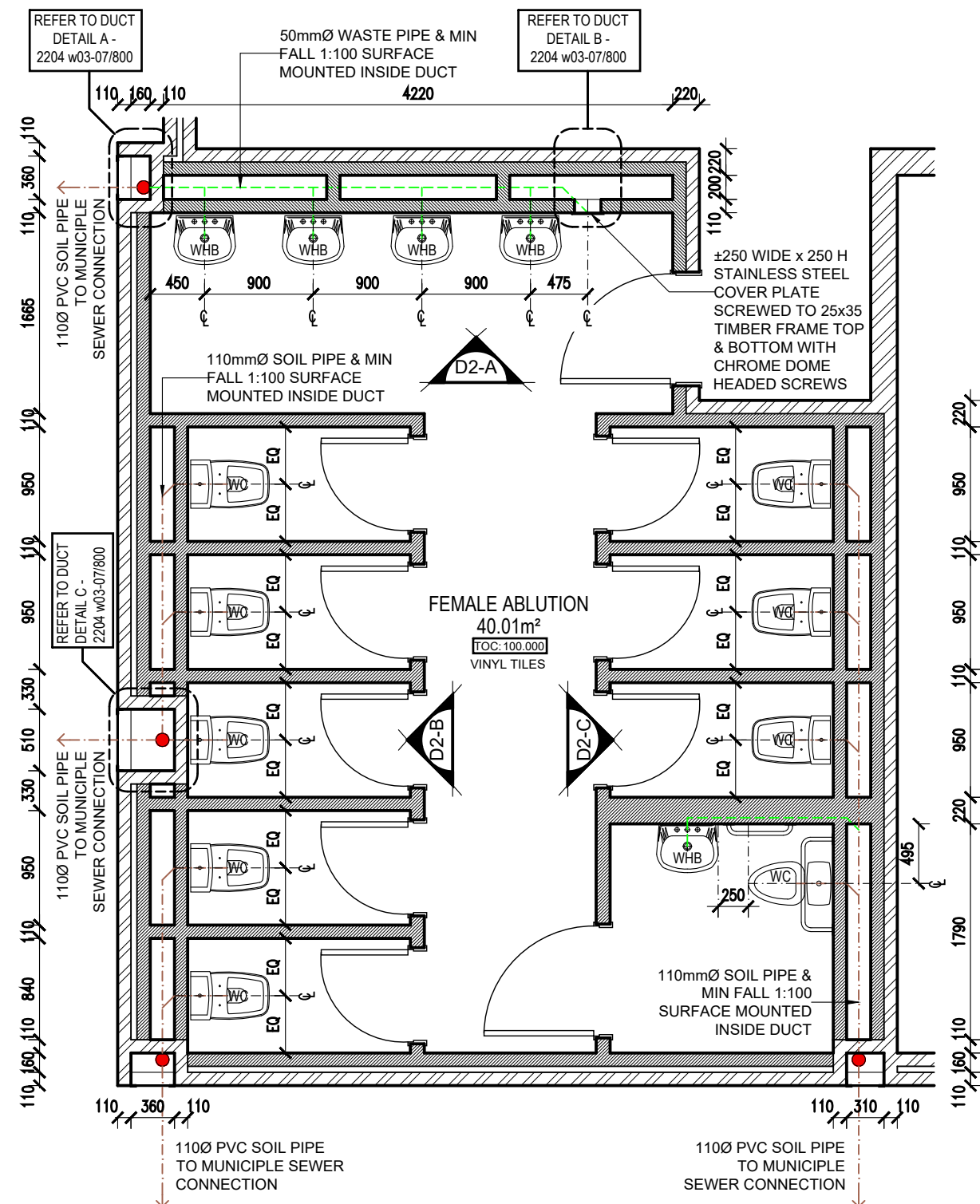


MALE TOILET DRAINAGE DETAIL 1 - PLAN  
SCALE 1:50

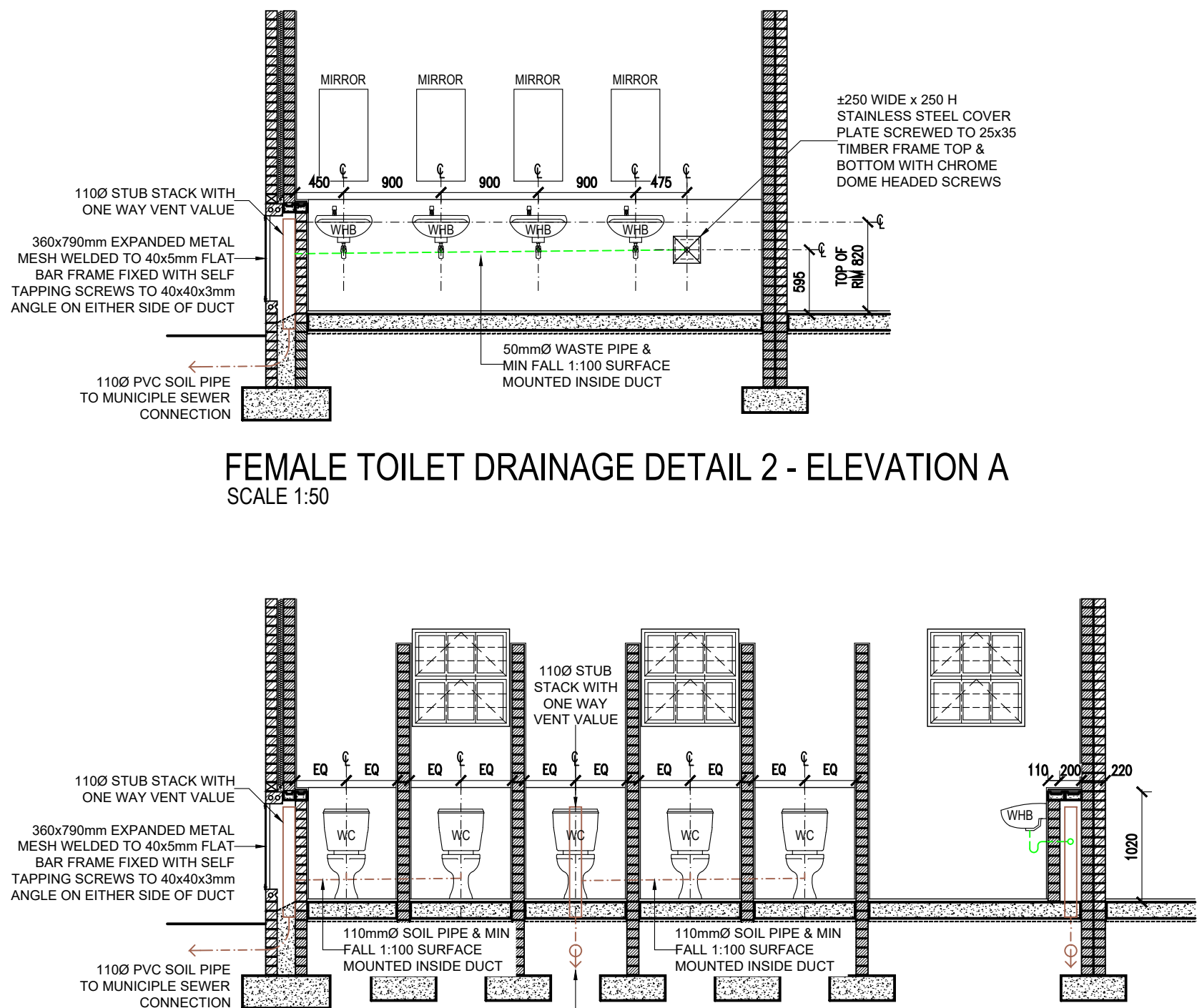


MALE TOILET DRAINAGE DETAIL 1 - ELEVATION A  
SCALE 1:50

MALE TOILET DRAINAGE DETAIL 1 - ELEVATION B  
SCALE 1:50

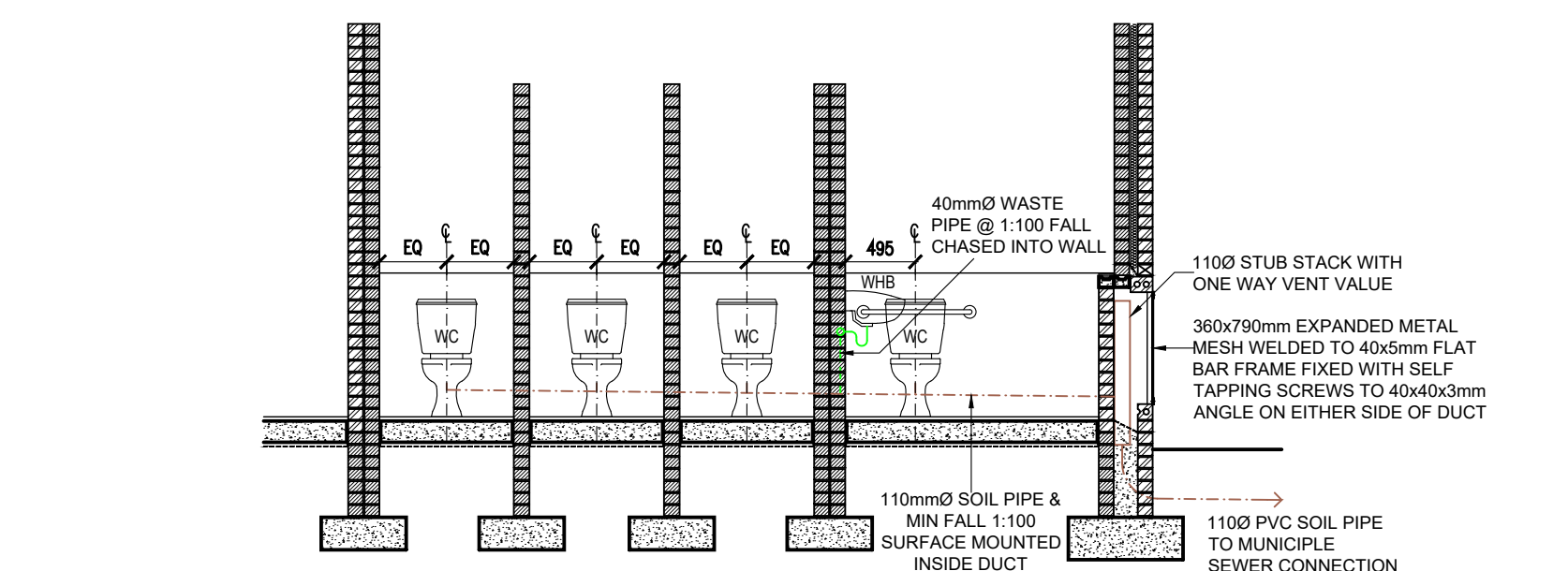


FEMALE TOILET DRAINAGE DETAIL 2 - PLAN  
SCALE 1:50

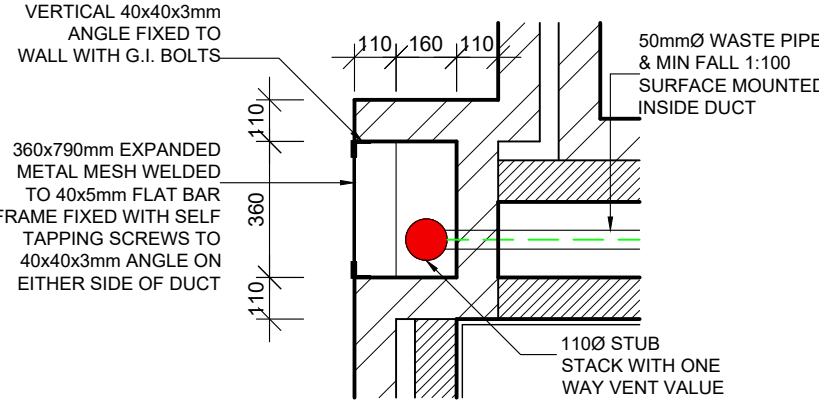


FEMALE TOILET DRAINAGE DETAIL 2 - ELEVATION A  
SCALE 1:50

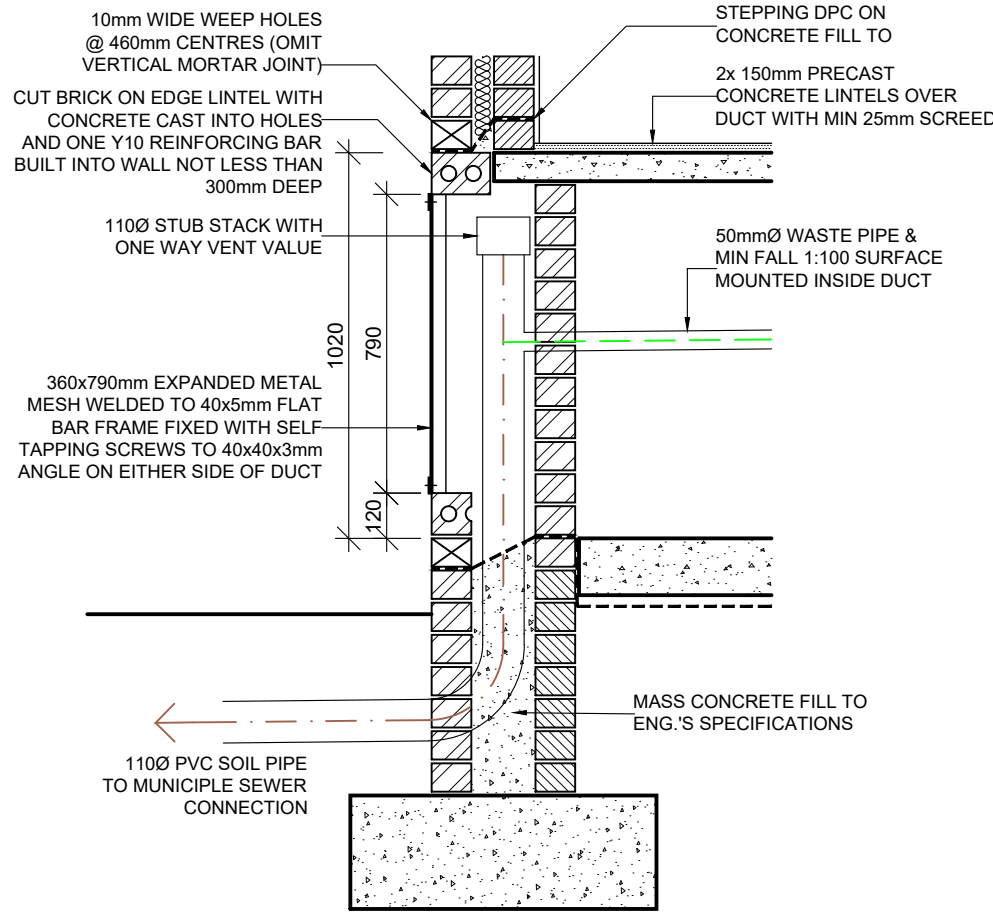
FEMALE TOILET DRAINAGE DETAIL 2 - ELEVATION B  
SCALE 1:50



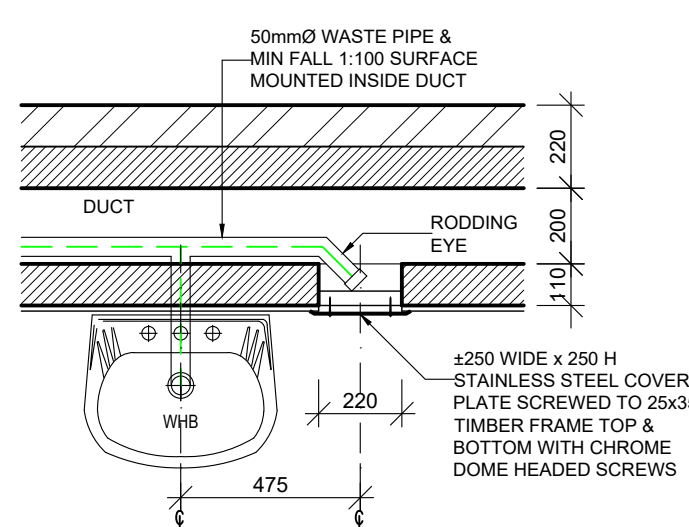
FEMALE TOILET DRAINAGE DETAIL 2 - ELEVATION C  
SCALE 1:50



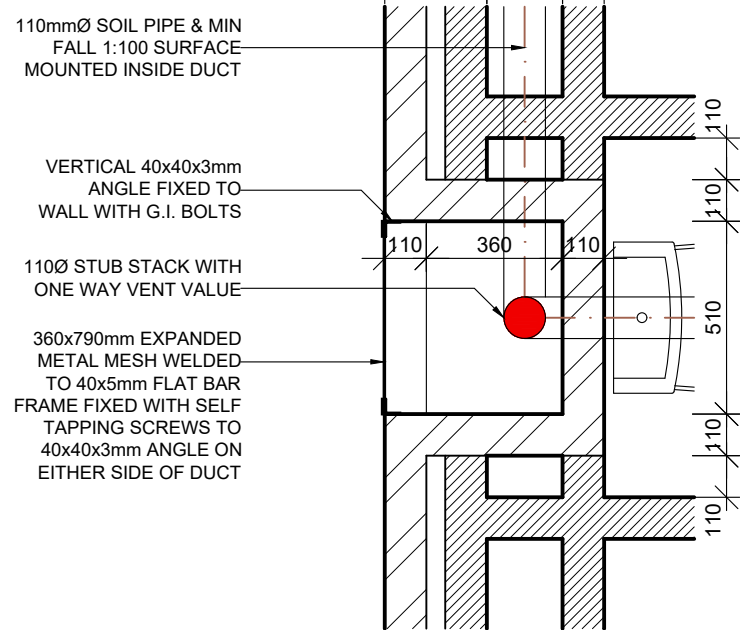
TYPICAL DUCT DETAIL A - PLAN  
SCALE 1:20



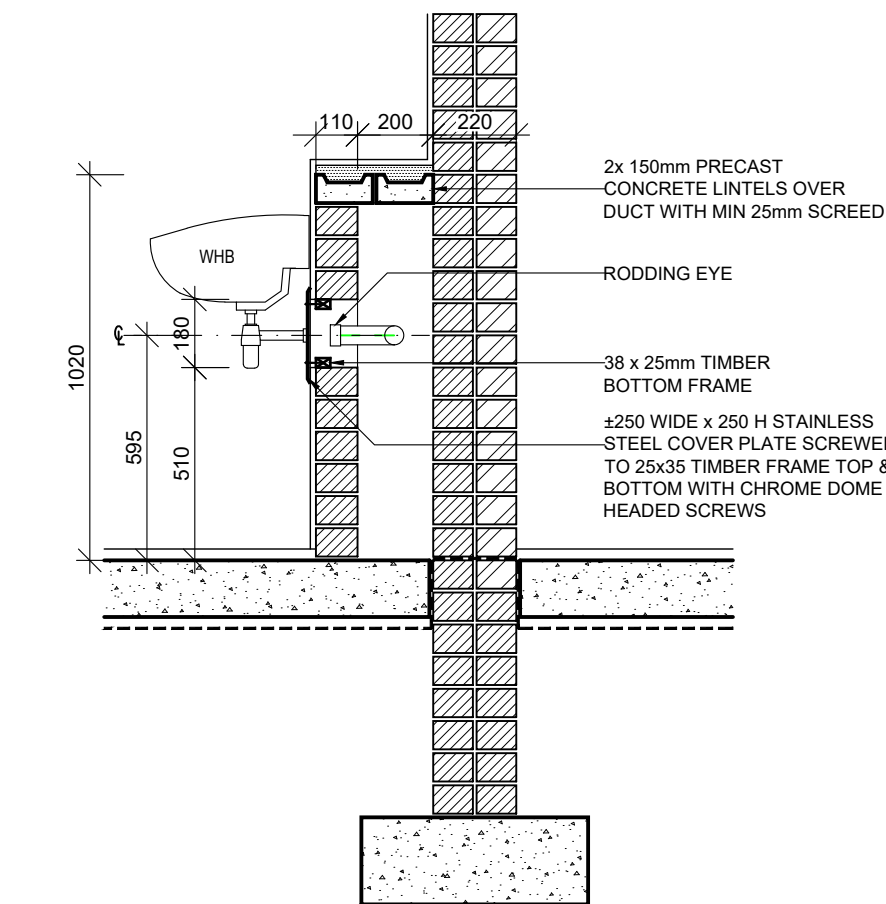
TYPICAL DUCT DETAIL A - SECTION  
SCALE 1:20



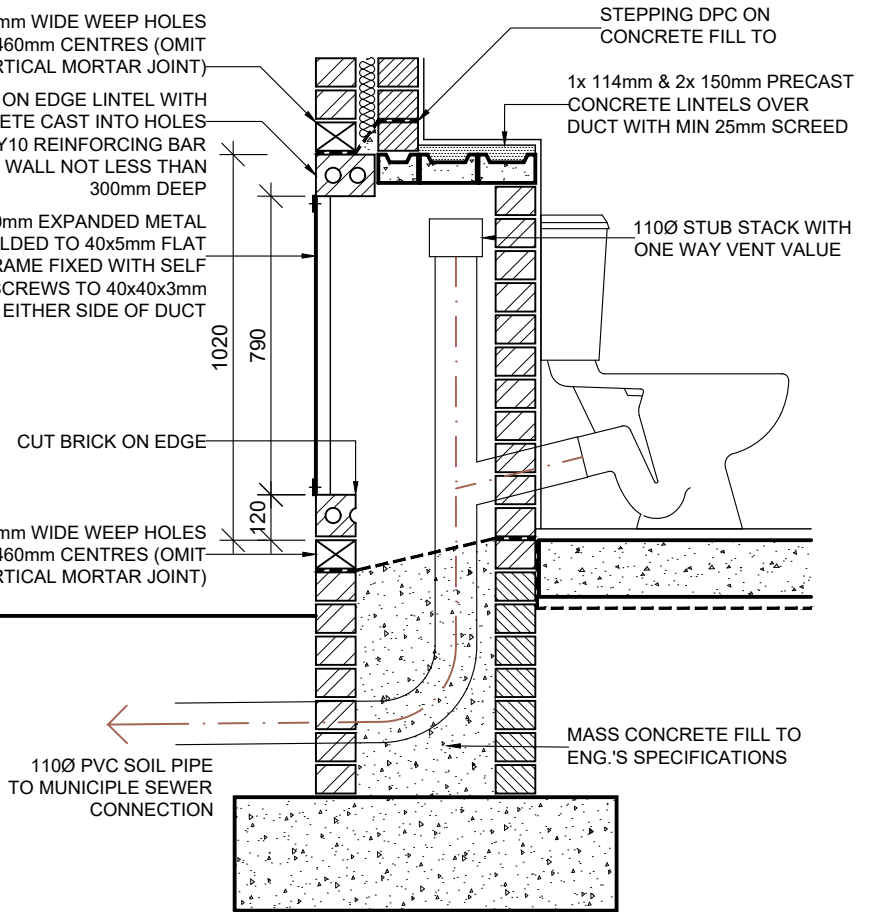
TYPICAL RODDING EYE  
DUCT DETAIL B - PLAN  
SCALE 1:20



TYPICAL DUCT DETAIL B - PLAN  
SCALE 1:20



TYPICAL RODDING EYE  
DUCT DETAIL B - SECTION  
SCALE 1:20



TYPICAL DUCT DETAIL B - SECTION  
SCALE 1:20

## NOTES

**INTERNAL WALLS** - SINCE INTERNAL WALLS ARE FACEBRICK, ALL WATER, ELECTRICAL AND GAS INSTALLATIONS TO BE DISCUSSED AND AGREED ON SITE PRIOR ERECTION OF WALLS STARTS. NO CHASING IS POSSIBLE AND NO SURFACE MOUNTED SERVICES IS ALLOWED.

**FURNITURE** - FOR LOOSE AND FIXED FURNITURE REFER TO FURNITURE SCHEDULE AND JOINERY DRAWINGS.

**SOLAR SHADING** VERTICAL OR HORIZONTAL SHADING DEVICES TO BE IMPLEMENTED TO EACH BLOCK INDIVIDUALLY AND AS NECESSARY TO FURTHER DETAILS.

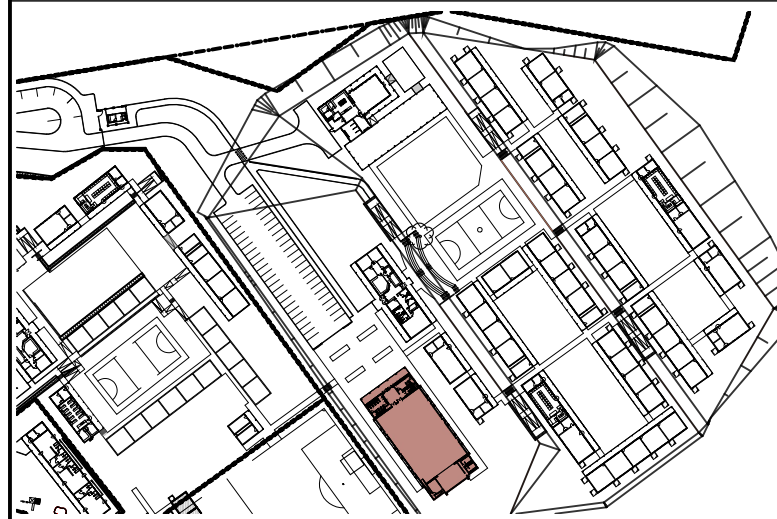
**STORM WATER** POSITION OF TANKS AND CONCRETE RAINWATER CHANNEL TO SUIT SITE CONDITIONS AS PER SITE LAYOUTS TO ACCOMMODATE STORMWATER AND OVERFLOW, TO CIVIL ENG'S DESIGN AND DETAIL.

**WINBLOCKS** REFER TO ELEVATIONS FOR POSITION OF WINBLOCKS

**TRUSS** TRUSS MANUFACTURE TO SUBMIT A WORKSHOP DRAWING FOR APPROVAL

**ISSUED FOR  
APPROVAL**

## KEY



## PSP

## ARCHITECT



ARCHITECTURAL PROFESSIONAL SACAP NUMBERS:  
**H.L. MANTEL SACAP 3045**

IMPLEMENTED BY

**INDEPENDENT  
DEVELOPMENT  
TRUST**

DESIGNED	SIGNATURE	DATE	SHEET SIZE
DRAWN			A1
VERIFIED			SCALE
VALIDATED			1:100

## CLIENT



## IMPLEMENTING AGENT



**PROJECT**  
DOE PORTFOLIO PROGRAMME  
ESTABLISHMENT OF NEW SCHOOLS  
**HILLBROW - SENIOR SECONDARY SCHOOL**  
PROVINCE: EASTERN CAPE PROVINCE

**DRAWING TITLE**  
**MULTI-PURPOSE HALL (BLOCK S-Y)  
DRAINAGE DETAILS**

**DRAWING DESCRIPTION**  
**MALE & FEMALE TOILET  
DRAINAGE DETAILS**

DRWG NUMBER	DISCIPLINE	DRAWING NUMBER	STATUS/REVISION
200500293	ARCH	2204 w03-07/800	FA AA